

Stair Nosing Australia Pty Ltd

ABN: 13 639 852 083.

Registered Office: 93 Kalyang Loop, BYFORD, WA, 6122, Australia

Contact: Daphne Stevenson 0422 803 365 Email: daphne@stairnosingaustralia.com.au



INSTALLING STAIR NOSING SURFACE MOUNTED STAIR NOSING ON HARD SURFACES

Examples



Mechanical Fixings recommended are 12-gauge stainless steel screws suitable for countersinking. For concrete, timber, tiled, masonry, carpeted/metal substrates and adhesive fixed.

All surfaces should be flat, free from dust, paint, grease and moisture. Prepare the surface to be as smooth as possible.

All grease, dirt and sand must be removed from step edge. Loose paint, and powdery concrete must be removed and steps made firm. Painted steps may need to be "scratched/sanded" to be able to form a bond with the adhesive. In some cases where an epoxy type paint has been used, a primer may need to be painted on step edge.

Any issues which may affect the stability or strength of the stair nosing **must** be addressed and corrected prior to installing any stair nosing profile.

NOTE: It is very important that damaged and worn steps and treads are repaired using a suitable structural filling compound such as a cement-based topping such as Rapid 45 to provide a solid base and to stop the stair nosing from rocking.



Additionally, use the correct stair nosing for the steps. Our stair nosings are designed to be fit for purpose. You have a choice of several profiles to ensure the most appropriate and safe product for your steps is installed.

Our aluminium stair nosing profiles have concealed fixings and are supplied with screw holes pre-drilled and countersunk for easy installation.

We strongly recommend a gap is left on each side up to 100mm. This will ensure that there will be water run-off. This accommodates the balustrade or handrail, thus allowing for the nosing to be installed between the handrails, allowing for a full pathway of travel.

Drill plug and screw method with application of adhesive



Process of installing stair nosings start by drilling pilot holes



Drilling a larger hole to countersink the screws so they don't sit proud



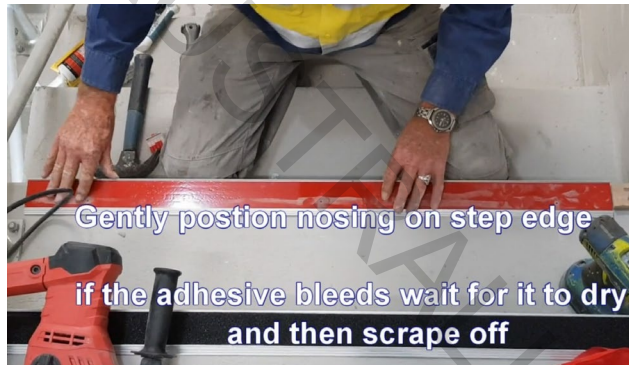
Gently hammer the plugs in



Make sure all dust is swept off step



Apply Soudal Fix All Adhesive in a snake like fashion



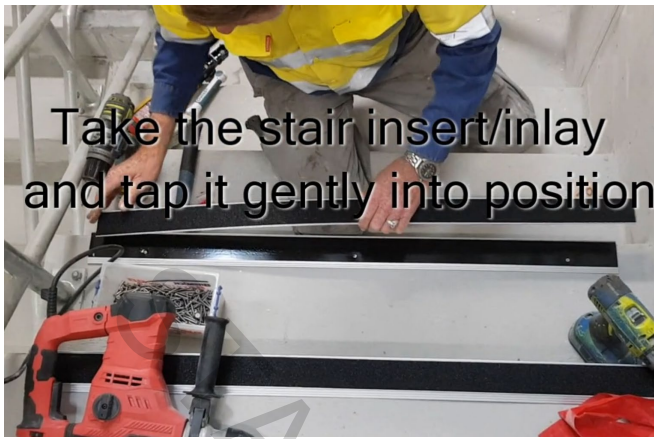
Gently position nosing on step edge if the adhesive bleeds wait for it to dry and then scrape off



Screw stair nosing to concrete substrate



Remove very sticky double sided tape



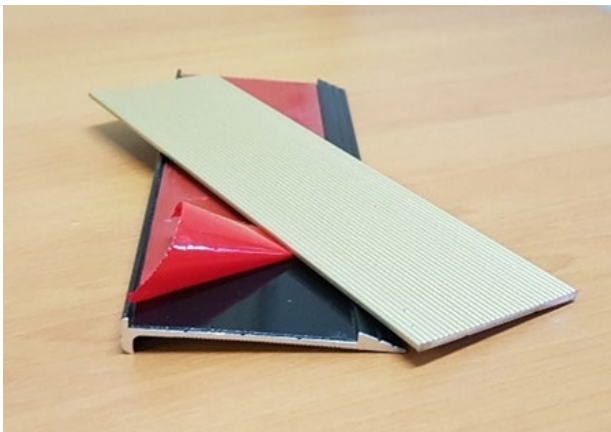
Place the insert into rebate. Start to gently peel the red tape from underneath the insert; then moving from one side to the other pull and remove tape clicking in insert as you go. Move from one side to the other. If you try and click the insert into position all at once, it may be slightly out by a couple of millimetres, by the time the insert is fully in place. When the insert is stuck down onto the red tape **it is very hard to move without bending or damaging it.**

Installing using adhesive only

Note: When using adhesive **only fixing** method; place inserts into stair nosing first.

For example;

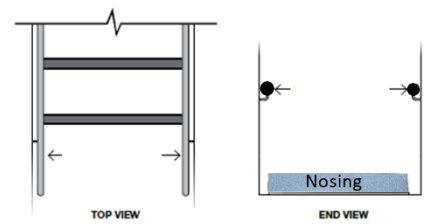
This is a black anodised stair nosing, the red is very strong double-sided tape, and the gold is ripple trim insert.



Use a chock to determine the margin you want to leave at the side of



Example



Handrail to handrail
is the clear path
of travel

Handrail to handrail
1000 mm

each step. This will ensure the nosings are centred. We generally use 70 mm or 100 mm to determine path of travel.

Installing with adhesive only



Clear any debris from step.



Place stair nosing on step edge upside down.



Using a caulking gun, apply Soudal adhesive in a snake like fashion to the back of the nosing.



Gently turn stair nosing over, and position on edge of step.



Using a rubber mallet tap nosing on step edge

[Installing nosing using adhesive](#)

[Installing stair nosing on wooden steps](#)

[Installing stair nosings-drill, plug and screw](#)

[Installing stair strips with adhesive](#)

[Installation of FRP strip-Drill plug and screw](#)

Make sure that if you apply **too much adhesive** and it bleeds on the edge of the nosing **LEAVE IT**. When it dries, you can use a blade to scrape off.

Using Soudal adhesive will mean that the steps will need **8 hours to dry**, with no pedestrian traffic.

Installing FRP strips



Using pre-drilled holes in the FRP strip, drill a pilot holes



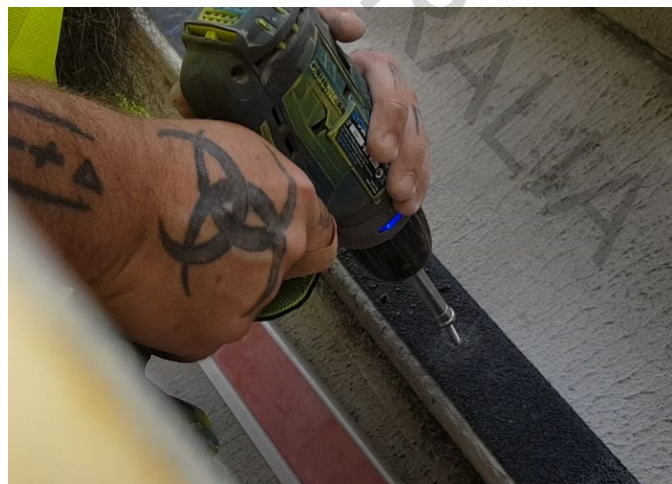
Using the countersunk holes as a guide, drill a much larger hole to accommodate a plug.



Insert green plug and hammer in



Position strip no more than 15 mm from the edge of the step



Finally screw into place with stainless steel screws.