



INSTALLING STAIR NOSING SURFACE MOUNTED STAIR NOSING ON HARD SURFACES

Examples



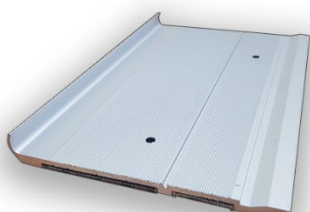
Mechanical Fixings recommended are 12-gauge stainless steel screws suitable for countersinking. For concrete, timber, tiled, masonry, carpeted/metal substrates and adhesive fixed.

All surfaces should be flat, free from dust, paint, grease and moisture. Prepare the surface to be as smooth as possible.

All grease, dirt and sand must be removed from step edge. Loose paint, and powdery concrete must be removed and steps made firm. Painted steps may need to be "scratched/sanded" to be able to form a bond with the adhesive. In some cases where an epoxy type paint has been used, a primer may need to be painted on step edge.

Any issues which may affect the stability or strength of the stair nosing **must** be addressed and corrected prior to installing any stair nosing profile.

NOTE: It is very important that damaged and worn steps and treads are repaired using a suitable structural filling compound such as a cement-based topping such as Rapid 45 to provide a solid base and to stop the stair nosing from rocking.



Additionally, use the correct stair nosing for the steps. Our stair nosings are designed to be fit for purpose. You have a choice of several profiles to ensure the most appropriate and safe product for your steps is installed.

Our aluminium stair nosing profiles have concealed fixings and are supplied with screw holes pre-drilled and countersunk for easy installation.

You may choose to leave a gap on each side up to 100mm. This will ensure that there will be water run-off. This accommodates the balustrade or handrail, thus allowing for the nosing to be installed between the handrails and centered. You may also choose to install "wall to wall"

Drill plug and screw method with application of adhesive



Using a chock to determine where you want the stair nosing to start, place the stair nosing on the step.



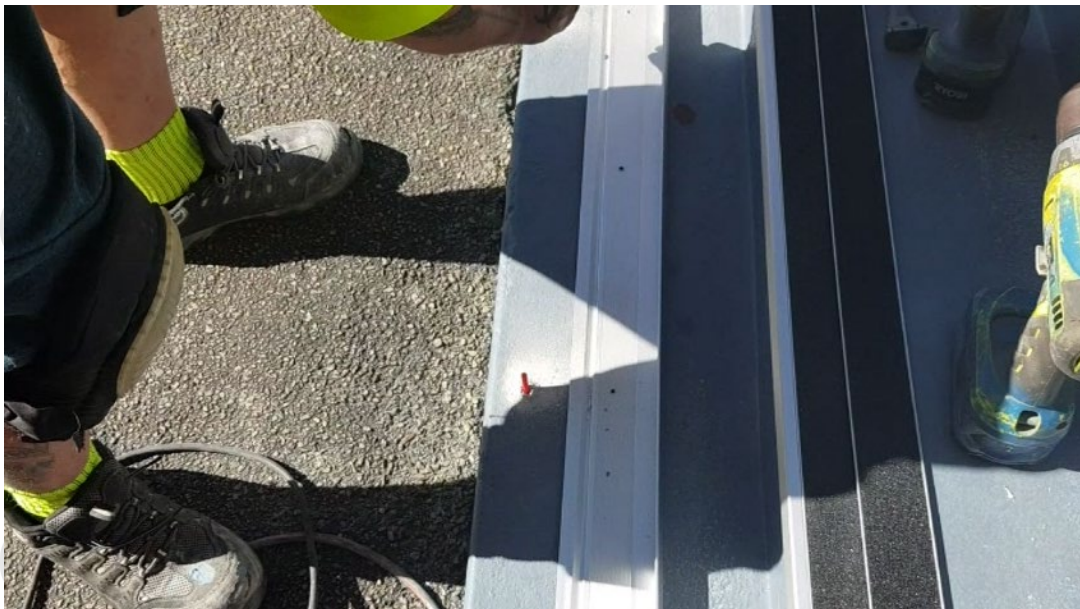
Using the counter sunk holes as a guide, drill a pilot hole into the step using a 3 mm drill bit. The yellow tape is the double-sided adhesive tape.



Turn the stair nosing over



Using a drill with a (5-6mm Drill Size) drill bit, drill into the pilot holes to make a larger hole. You can use a 6 mm drill bit if the substrate is very hard. If the substrate is soft/flaky use a smaller bit. If the substrate is soft like limestone or pavers, we may also use a green plug.



Place the plugs into the holes.



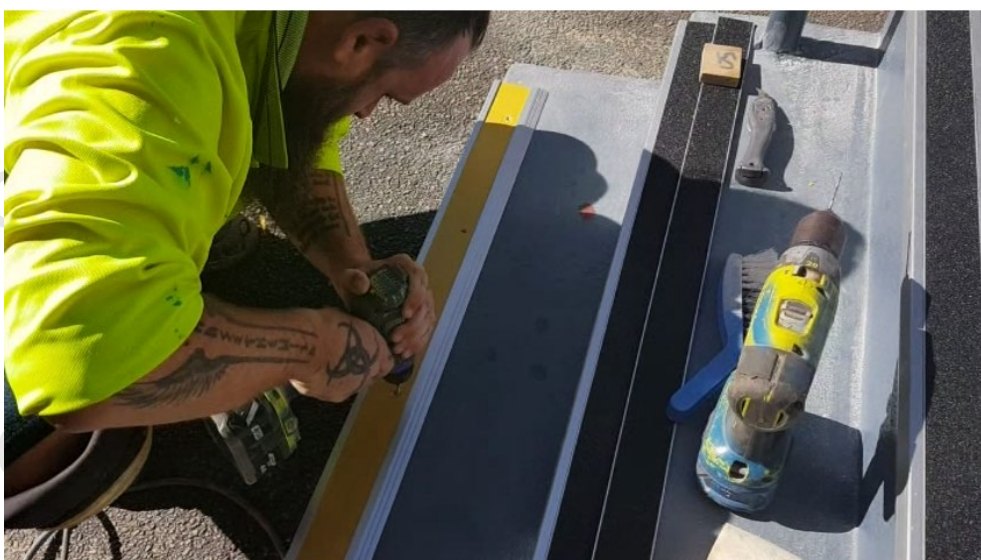
Brush off the concrete dust off the step



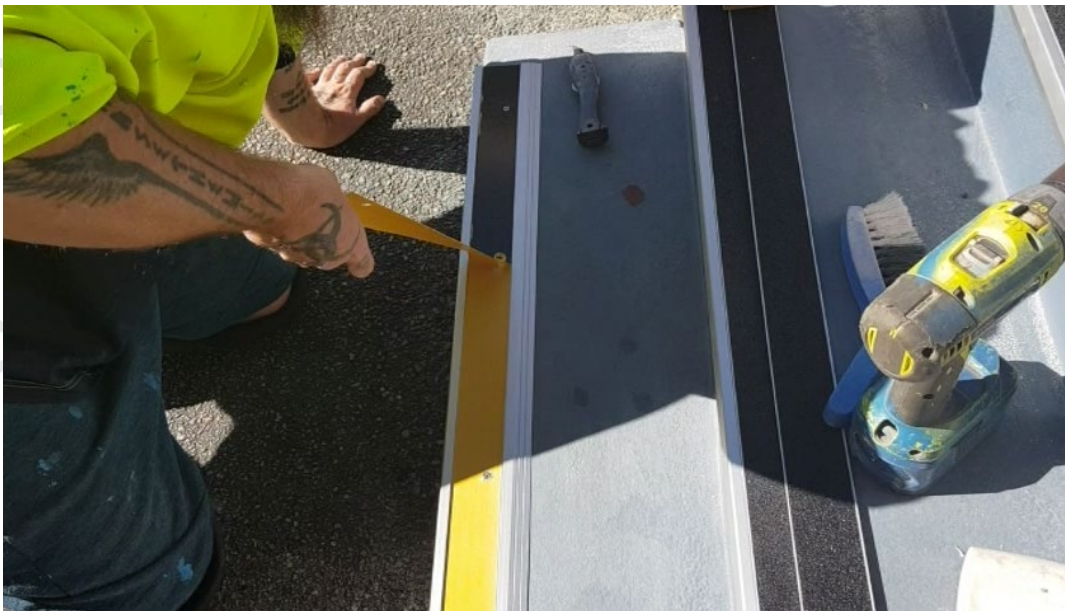
Apply adhesive such as Soudal Hi-Tack Fix All in a snake like fashion to the back of the stair nosing. We use screws and adhesive for a high pedestrian area such as a school.



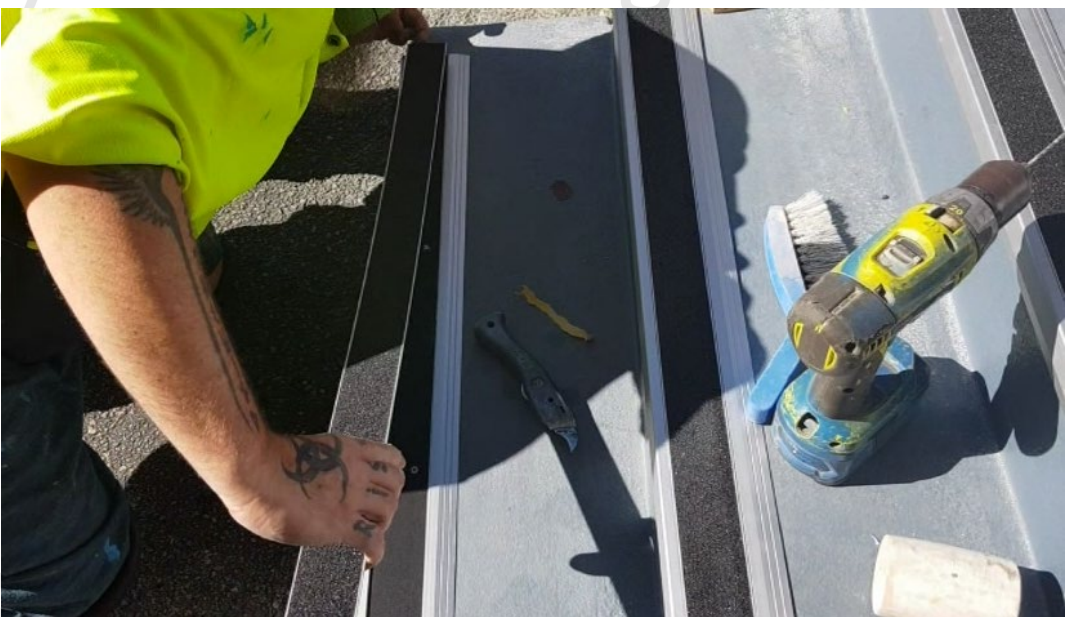
Gently, position stair nosing on step lining up the holes with the plugs.



Start by drilling a screw into the middle of the step first. Do not screw it in all the way, tighten the screws once all screws are lined up with holes and plugs.



Remove double sided tape. (It will either be yellow or red)



Working from **one side to the other** gently lower insert into place. **DO NOT** try and place insert in all at once. It is best to move from one side to the other. The tape is so strong that if you make a mistake and try to pull up the insert, the insert will buckle.

If you try and click the insert into position all at once, it may be slightly out by a couple of millimetres, by the time the insert is fully in place. When the insert is stuck down onto the red tape **it is very hard to move without bending or damaging it.**

Installing using adhesive only

Note: When using adhesive **only fixing** method; place inserts into stair nosing first.

For example;

This is a clear anodised stair nosing, the red tape is very strong double-sided tape, and the black is a solid 2.5 mm thick insert is ripple trim insert.



Clear any debris from step.



Place stair nosing on step edge upside down.



Using a caulking gun, apply Soudal adhesive in a snake like fashion to the back of the nosing.



Gently turn stair nosing over, and position on edge of step.



Using a rubber mallet tap nosing on step edge

VIDEOS

- [Installing nosing using adhesive](#)
- [Installing stair nosing on wooden steps](#)
- [Installing stair nosings-drill, plug and screw](#)
- [Installing stair strips with adhesive](#)
- [Installation of FRP strip-Drill plug and screw](#)

Make sure that if you apply **too much adhesive** and it bleeds on the edge of the nosing **LEAVE IT**. When it dries, you can use a blade to scrape off.

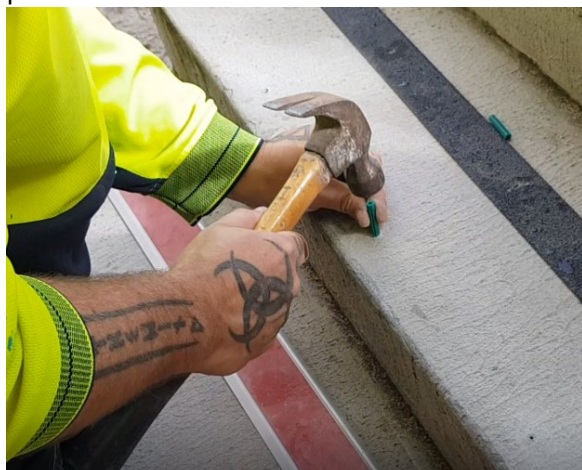
Installing FRP strips



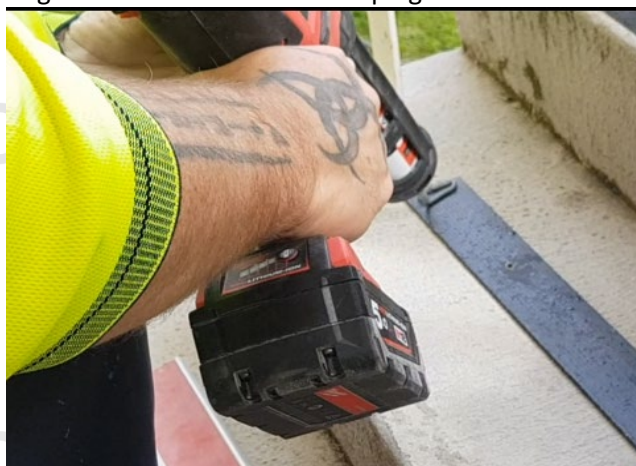
Using pre-drilled holes in the FRP strip, drill a pilot holes



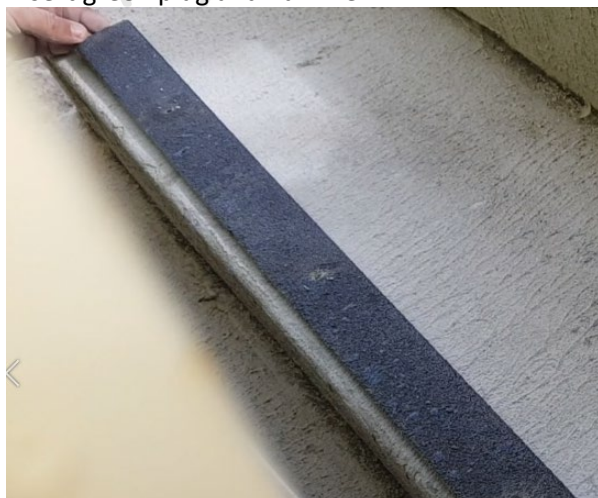
Using the countersunk holes as a guide, drill a much larger hole to accommodate a plug.



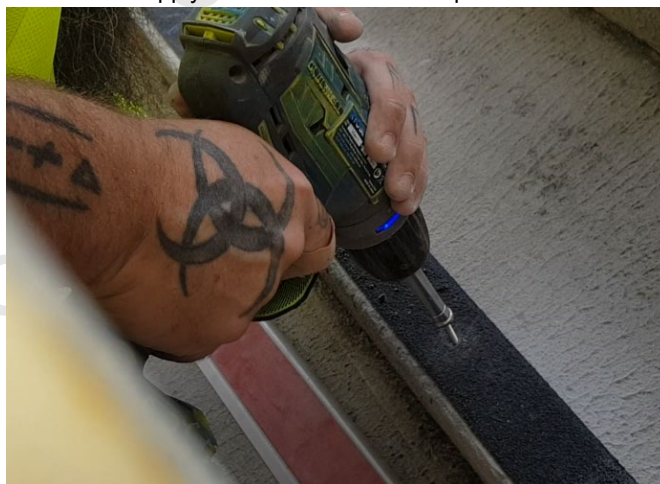
Insert green plug and hammer in



Apply adhesive to back of strip



Position strip no more than 15 mm from the edge of the step



Finally screw into place with stainless steel screws.

If the substrate is firm we are happy to use red plugs. If the substrate is flaky we will use a green plug.

VIDEO: Installation of FRP strips